
Overview

File Maintenance can be defined as the process of archiving specific files from the Viper Pro and deleting files that are no longer needed.

It is recommended that the user perform this maintenance at the end of each day. If this is not possible, maintenance should be performed at least once a week.

File maintenance ensures that the Viper Pro system can perform at optimal efficiency by removing files that are no longer needed. Maintenance also safeguards valuable information from being lost in the event that a file is damaged or corrupted, since files will be archived on a personal computer or laptop for future reference.

File Maintenance

All Viper Pro job files are stored in memory located inside the Viper Pro. The storage location for these files is of a fixed size and will hold a large, but limited, number of files. File maintenance should be conducted on a regular basis to ensure sufficient storage space is available for your future jobs.

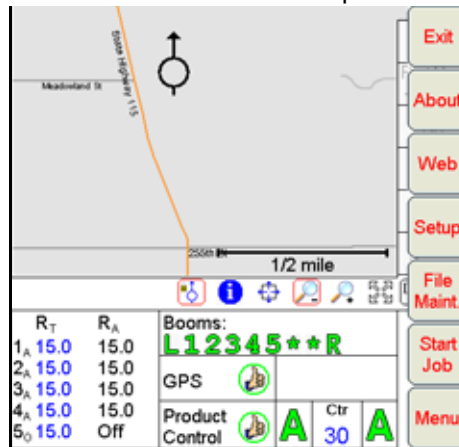
Files can be loaded onto the Viper Pro or downloaded from the Viper Pro using an external USB thumb drive. Insert the USB thumb drive into the USB connector located in the lower left hand corner of the Viper Pro.

Note: *Do not leave the USB thumb drive in the front USB connector while you are operating the machine. Insert the USB thumb drive into the front USB connector only to perform file maintenance.*

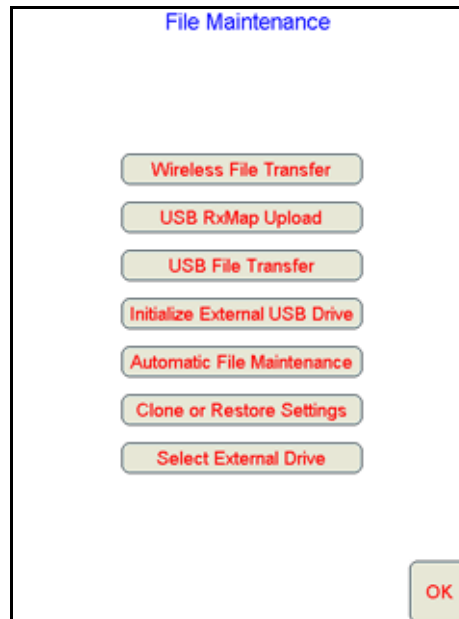
Preparing a USB Thumb Drive for File Maintenance

The USB thumb drive must be prepared with the necessary file folders to simplify file maintenance. To populate your thumb drive with the necessary file folders, do the following:

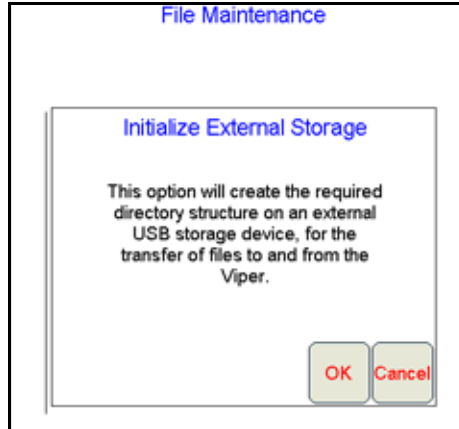
1. Start Viper Pro.
2. Insert a clean formatted USB thumb drive into the front USB port.



3. Press **Menu**, **File Maint**. The following screen will display.



4. Press **Initialize External Storage**. The following screen will display.

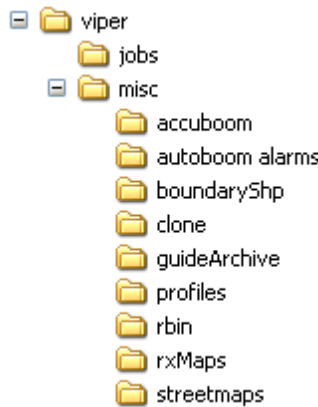


- 5. Press **OK**. The necessary file folders will be loaded onto the thumb drive.
- 6. Press **OK** to return to the File Maintenance main menu.

Your USB thumb drive will now be populated with the necessary file folders needed by the Viper Pro.

Thumb Drive File Structure

Your USB thumb drive will be populated with the following file folder structure. The main two files are the jobs folder and the misc folder. The jobs folder will initially be empty. This folder will contain job related information that you download from the Viper Pro. This misc folder contains those files that are not specifically job related.



Misc Folder Sub-folders

The misc folder contains information that is not job specific. Several sub-folders are contained in the misc folder to help organize this information. The following information is contained in the sub-folders.

AccuBoom Sub-folder: The AccuBoom sub-folder can be used to upload or download no-spray zone templates that have been set up for specific fields. Once these templates are transferred to the Viper Pro, they can be used when starting a new job in the selected field.

AutoBoom Alarms Sub-folder: The AutoBoom Alarms sub-folder can be used to download AutoBoom alarm information. This information will only be available on the Viper Pro if the alarm recording function is enabled in AutoBoom.



BoundaryShp: The boundaryShp folder contains any shapefiles for field boundaries created using GIS software and transferred to the Viper Pro console.

Note: *Field Boundaries created using the Viper Pro are saved as a part of the Job file.*

Clone: The clone sub-folder will only appear on the USB drive if a clone of the Viper Pro has been created. Clones may be used as “restore points” to quickly and easily reset the Viper Pro console to a previous set up. A clone will contain the following files contained within the Viper Pro file structure:

- Coverage Maps
- Prescription Maps
- Streetmaps
- Scout Maps
- A-B Lines
- Job files
- Rbin files
- Boom Configuration
- AccuBoom Configuration
- Comm Port settings

Refer to *Clone or Restore Settings* section on page 168 for instructions on creating or restoring clone files.

GuideArchive Sub-folder: The guide Archive sub-folder can be used to transfer A-B guidance lines from one machine to another.

Profiles Sub-folder: The profiles sub-folder allows you to load machine profiles that have been set up for different machine configurations.

Rbin Sub-folder: The rbin sub-folder allows you to download specific job rbins without downloading the complete job information.

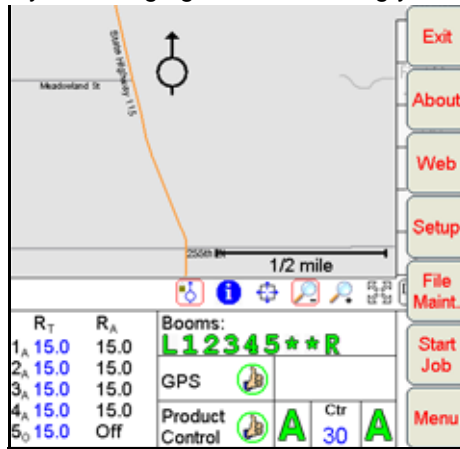
RxMaps Sub-folder: The ‘rxMaps’ sub-folder is used to transfer prescription maps to the Viper Pro. These prescription maps must be in the proper shapefile format used by the Viper Pro.

Streetmaps Sub-folder: The streetmaps sub-folder can be used to load streetmap shapefiles onto the Viper Pro. The streetmaps must be in the proper shapefile format used by the Viper Pro.

Note: *Once the streetmap files are loaded into the Viper, you will still need to install the streetmap into the Viper Pro system memory.*

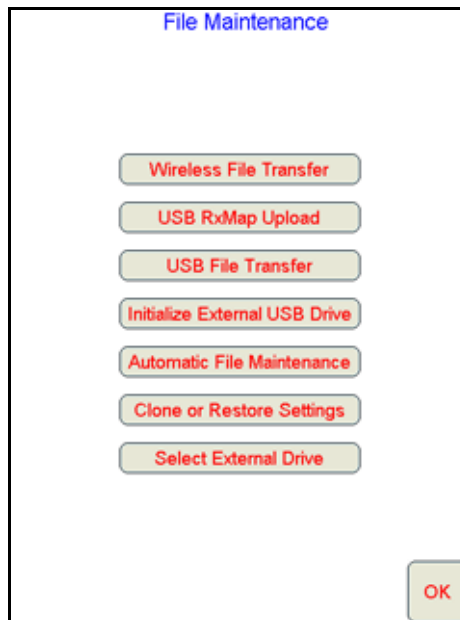
Performing File Maintenance

The Viper Pro provides much flexibility in managing and maintaining your files on the Viper Pro.



To access the File Maintenance feature:

1. Press **Menu** on the main Viper Pro screen.
2. Select **File Maint.** The following file maintenance options appear.



Wireless File Transfer

The Wireless File Transfer button is displayed only if a Raven Field Hub is connected and communicating with the Viper Pro console. Select this option to setup the desired method for initiating file transfer via a wireless connection.

Note: A wireless signal is required to transfer files from the Viper Pro console. If signal is weak or not available, files may not be transferred as expected.

Automatic

If the “Automatic File Upload at End of Job” option is selected, the Viper Pro will attempt to transfer application files automatically each time a job file is closed.

Prompt

If the “Prompt Before Upload at End of Job” option is enabled, the operator will be prompted to before the Viper Pro attempts to transfer files.

Disable

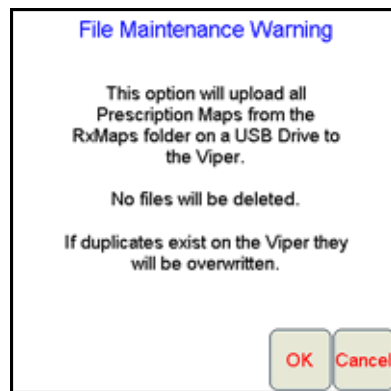
Select the “Disable Wireless File Transfer” to disable sending files from the Viper Pro.

Uploading Prescription Maps from a USB Thumb Drive

Prescription maps may be uploaded from the USB thumb drive by selecting the USB RxMap Upload button on the File Maintenance screen.

To upload prescription maps:

1. Press **Menu** on the main screen.
2. Select **File Maint.** from the list of menu options.
3. Select **USB RxMap Upload** from the list of file maintenance options. The following warning screen will display.



4. Press **OK** to upload the prescription maps from the USB thumb drive to the Viper Pro internal storage or **Cancel** to abort the upload process.

USB File Transfer and Advanced File Maintenance

The USB File Transfer feature allows the machine operator to select specific files to copy, move or delete from a connected USB drive or internal memory.

To perform advanced file Maintenance:

1. Press **Menu** on the main screen.
2. Select **File Maint.** from the list of menu options.

3. Select **USB File Transfer** from the list of file maintenance options. The Advanced File Maintenance screen will display.

Advanced File Maintenance		
Select file type to work with		
<input type="radio"/> Job	<input type="radio"/> Guidance	<input type="radio"/> Accuboom
<input type="radio"/> RBIN	<input type="radio"/> RxMap	<input type="radio"/> Profile
<input type="radio"/> Street Map	<input type="radio"/> Boundary	<input type="radio"/> All Types

Note: Touch the **Reset** button at the bottom of the Advanced File Maintenance screen to clear all selections and begin the advanced file maintenance setup again. Select the **Cancel** button to return to the File Maintenance screen.

Selecting a File Type to Work With

4. Select the type of file on which to perform file maintenance or transfer via a connected USB drive.

Advanced File Maintenance		
Select file type to work with		
<input checked="" type="radio"/> Job	<input type="radio"/> Guidance	<input type="radio"/> Accuboom
<input type="radio"/> RBIN	<input type="radio"/> RxMap	<input type="radio"/> Profile
<input type="radio"/> Street Map	<input type="radio"/> Boundary	<input type="radio"/> All Types

Selecting an Operation to Perform

5. Once the type of file is selected, the Select Operation to Perform selection displays. Select:
 - Copy - Makes a copy of the selected file on the destination storage location. Copied file is retained on the source storage location.
 - Delete - Deletes the selected files from the source storage location.
 - Move - Move the file from the source storage location to the destination storage location. The selected file on the source storage location is deleted.

Advanced File Maintenance		
Select file type to work with		
<input checked="" type="radio"/> Job	<input type="radio"/> Guidance	<input type="radio"/> Accuboom
<input type="radio"/> RBIN	<input type="radio"/> RxMap	<input type="radio"/> Profile
<input type="radio"/> Street Map	<input type="radio"/> Boundary	<input type="radio"/> All Types
Select Operation to Perform		
<input type="radio"/> Copy	<input type="radio"/> Delete	<input type="radio"/> Move

Selecting Source/Destination

6. Select the source location of the files on which the selected operation will be performed. For the Copy and Move operations, the destination is also listed.

Advanced File Maintenance		
Select file type to work with		
<input checked="" type="radio"/> Job	<input type="radio"/> Guidance	<input type="radio"/> Accuboom
<input type="radio"/> RBIN	<input type="radio"/> RxMap	<input type="radio"/> Profile
<input type="radio"/> Street Map	<input type="radio"/> Boundary	<input type="radio"/> All Types
Select Operation to Perform		
<input checked="" type="radio"/> Copy	<input type="radio"/> Delete	<input type="radio"/> Move
Select Source/Destination		
<input checked="" type="radio"/> Viper --> USB Drive	<input type="radio"/> USB Drive --> Viper	

Advanced File Maintenance		
Select file type to work with		
<input checked="" type="radio"/> Job	<input type="radio"/> Guidance	<input type="radio"/> Accuboom
<input type="radio"/> RBIN	<input type="radio"/> RxMap	<input type="radio"/> Profile
<input type="radio"/> Street Map	<input type="radio"/> Boundary	<input type="radio"/> All Types
Select Operation to Perform		
<input type="radio"/> Copy	<input checked="" type="radio"/> Delete	<input type="radio"/> Move
Select Source/Destination		
<input checked="" type="radio"/> From Viper	<input type="radio"/> From USB Drive	



Selecting Associated File Actions

7. Some file types may be associated with a job file on the Viper Pro. If job files will be deleted, the operator must choose what action to perform on files associated with the job file being deleted.

Advanced File Maintenance		
Select file type to work with		
<input checked="" type="radio"/> Job	<input type="radio"/> Guidance	<input type="radio"/> Accuboom
<input type="radio"/> RBIN	<input type="radio"/> RxMap	<input type="radio"/> Profile
<input type="radio"/> Street Map	<input type="radio"/> Boundary	<input type="radio"/> All Types
Select Operation to Perform		
<input type="radio"/> Copy	<input checked="" type="radio"/> Delete	<input type="radio"/> Move
Select Source/Destination		
<input checked="" type="radio"/> From Viper	<input type="radio"/> From USB Drive	
Select Associated File Actions		
<input type="radio"/> Delete Accuboom File	<input type="radio"/> Delete RxMap Files	
<input type="radio"/> Delete RBIN File	<input type="radio"/> Select All	
<input type="radio"/> Prompt		

Note: Deleting job files is the only condition which associated file actions must be selected.

Selecting File Selection Method

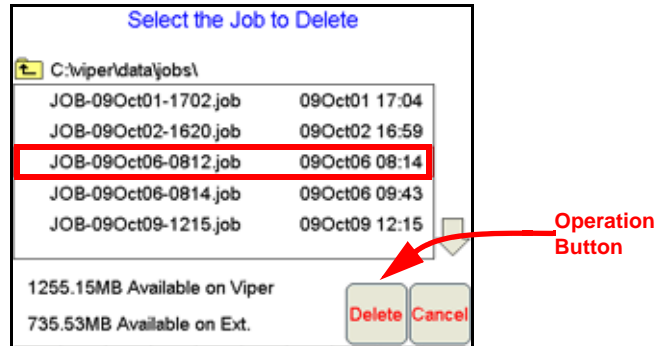
- 8. Next, select the method to select specific files.
- By Age - Select the “by Age” option to set an age for files which the action will be performed upon. The operation will be automatically selected and copied, moved, or deleted.
- All - Select the “All” option to perform the selected operation on all files of the selected type.
- Selected - Set the “Selected” option to manually select the files to copy, move, or delete.

Advanced File Maintenance		
Select file type to work with		
<input checked="" type="radio"/> Job	<input type="radio"/> Guidance	<input type="radio"/> Accuboom
<input type="radio"/> RBIN	<input type="radio"/> RxMap	<input type="radio"/> Profile
<input type="radio"/> Street Map	<input type="radio"/> Boundary	<input type="radio"/> All Types
Select Operation to Perform		
<input type="radio"/> Copy	<input checked="" type="radio"/> Delete	<input type="radio"/> Move
Select Source/Destination		
<input checked="" type="radio"/> From Viper	<input type="radio"/> From USB Drive	
Select Associated File Actions		
<input type="radio"/> Delete Accuboom File	<input type="radio"/> Delete RxMap Files	
<input type="radio"/> Delete RBIN File	<input type="radio"/> Select All	
<input type="radio"/> Prompt		
Selection Method		
<input type="radio"/> Delete by Age	<input checked="" type="radio"/> Delete Selected	
<input type="radio"/> Delete All		

Next Reset Cancel

9. Finally, touch the **Next** button to begin the file maintenance operation.

If the “Selected” option is selected in step 8, a list of available files will be listed.



Select a file from the list and touch the operation button to perform the operation on the selected file. Touch the **Cancel** button to return to the Advanced File Maintenance screen.

Initialize External USB Drive

Select the Initialize External USB Drive and follow the on-screen instructions to setup the required file structure on a connected USB thumb drive.

Automatic File Maintenance

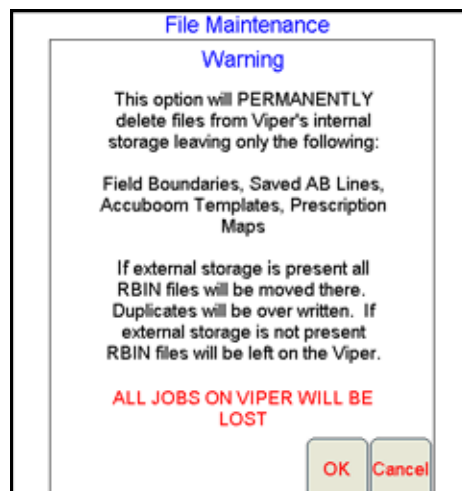
The automatic file maintenance feature will automatically perform the following steps:

1. Move all Rbin files to the USB drive.
2. Delete all existing job files from Viper Pro internal storage.

Note: All field boundaries, saved A-B lines, AccuBoom templates, street and prescription maps will be maintained on the internal storage.

To perform automatic File Maintenance:

1. Press **Menu** on the main screen.
2. Select **File Maint.** from the list of menu options.
3. Select **Automatic File Maintenance** from the list of file maintenance options. The following warning screen will display.

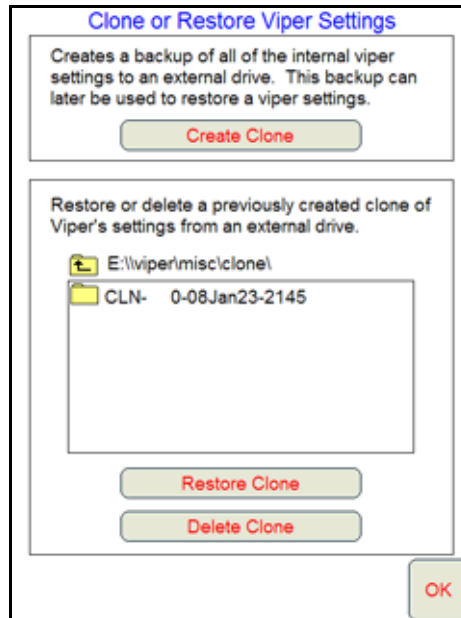


Press **OK** to download the Rbin files from the Viper internal storage and delete associated job files from the Viper Pro or **Cancel** to abort the downloading of Rbin files.

Clone or Restore Settings

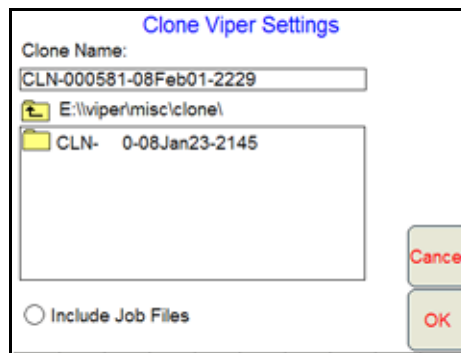
The Clone or Restore Settings feature can be used to save all settings and files from the Viper Pro console to external memory. These clones can then be reloaded to restore settings to the same Viper Pro or transferred to another Viper Pro console.

Touch the **Clone or Restore Settings** button to view the following display.



If a clone has previously been created, select the file name from the list and touch Restore Clone to restore the selected clone on the Viper Pro console. To delete a clone, select the file name and touch Delete Clone to remove the selected clone.

Touch the Create Clone button to save the Viper Pro's settings to the selected file. The following screen will be displayed.



Enter a name for the clone in the Clone Name field along the top of the screen. Select the "Include Job Files" option to include the current Job files located on the Viper Pro's internal memory with the clone. Once finished, touch the OK button to create the clone.

Select External Drive

If you have more than one flash drive connected to the Viper Pro at one time, the Select External Drive button will be displayed on the File Maintenance screen. Touch this button to select an external drive.